



Every Supply Chain is Unique, Capture Yours!

Optimize

Design

Experiment

Innovate

Timofey Popkov, Director of Business Development

Anatoly Zherebtsov, Head of ALX Development



© The AnyLogic Company | www.anyLogistix.com | www.anylogic.com

Agenda

- anyLogistix timeline since ALC'2016
- What is new:
 - anyLogistix editions
 - New UI features
 - Analytical optimization
 - Scenario inter-conversion
 - Dynamic Simulation
- anyLogistix 3.0

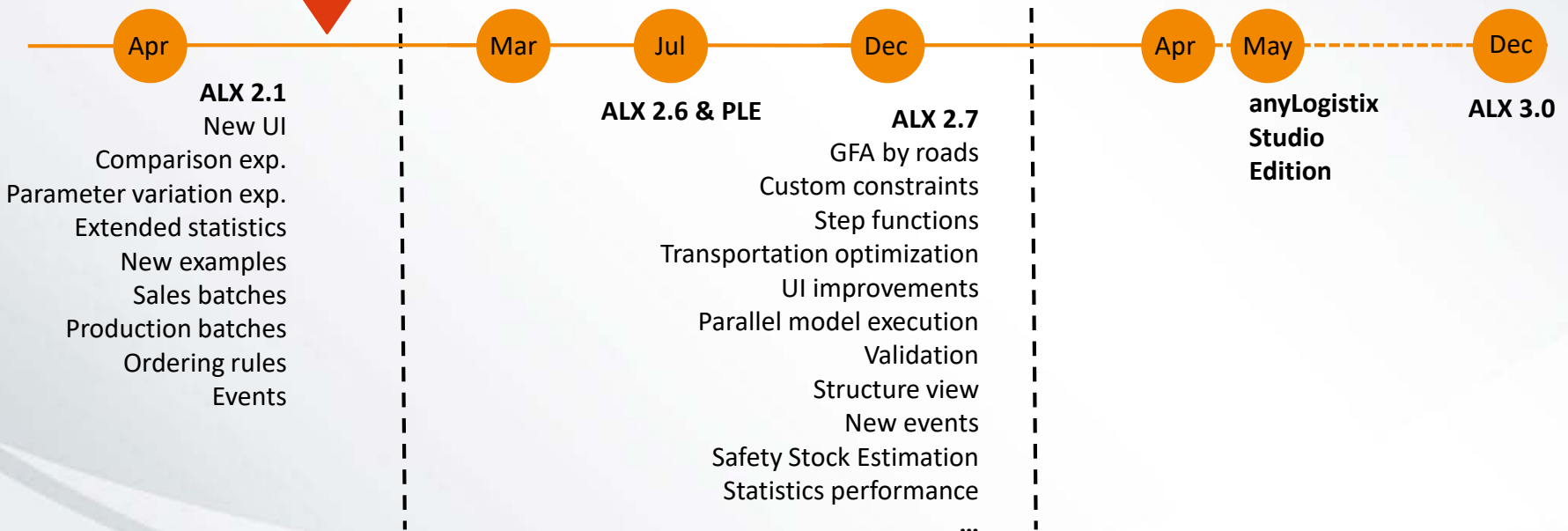
anyLogistix Timeline Since ALC' 2016

2016

2017

2018

ALC'2016

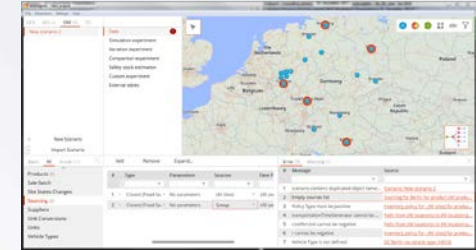


What is New: anyLogistix Editions

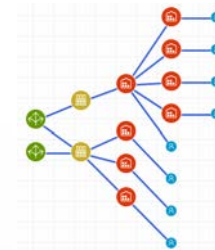
	Personal Learning Edition (FREE)	Professional Edition	Studio Edition
Greenfield analysis	✓	✓	✓
Network optimization	✓	✓	✓
Dynamic simulation	✓	✓	✓
Scenarios interconversion	✓	✓	✓
Plug-in extensions	✗	✓	✓
Create extensions	✗	✗	✓
All supported databases	Limited	✓	✓
Any model size	Limited	✓	✓
All Experiments	Limited	✓	✓
All Tables	Limited	✓	✓

What is New: Some New UI Features

- Filters
 - You can choose which object to see on the map
- Validation
 - anyLogistix checks scenario data and experiment settings

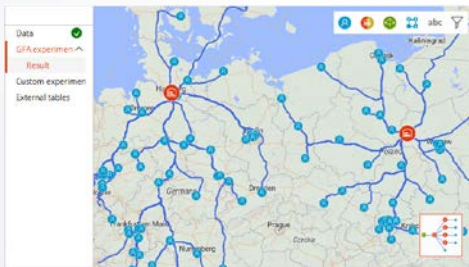
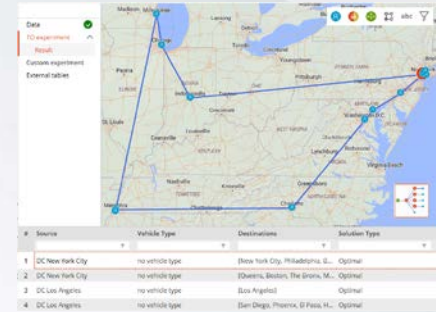


- Get support
 - Contact technical support from the anyLogistix environment
- Supply chain structure view
 - Now you can look at both geographical and logical maps



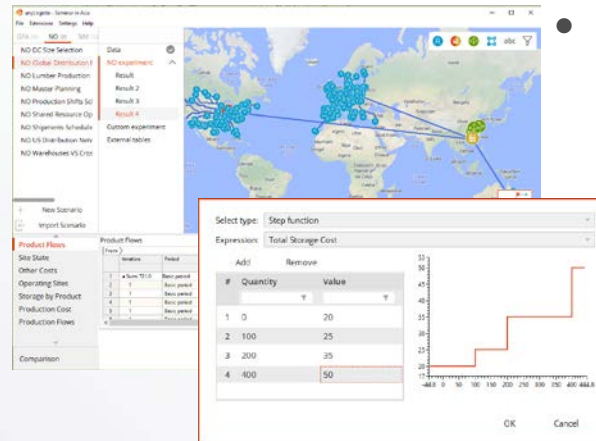
What is New: Analytical Optimization

- Transportation optimization
 - Vehicle routing problem (VRP)
 - Capacitated Vehicle routing problem (CVRP)



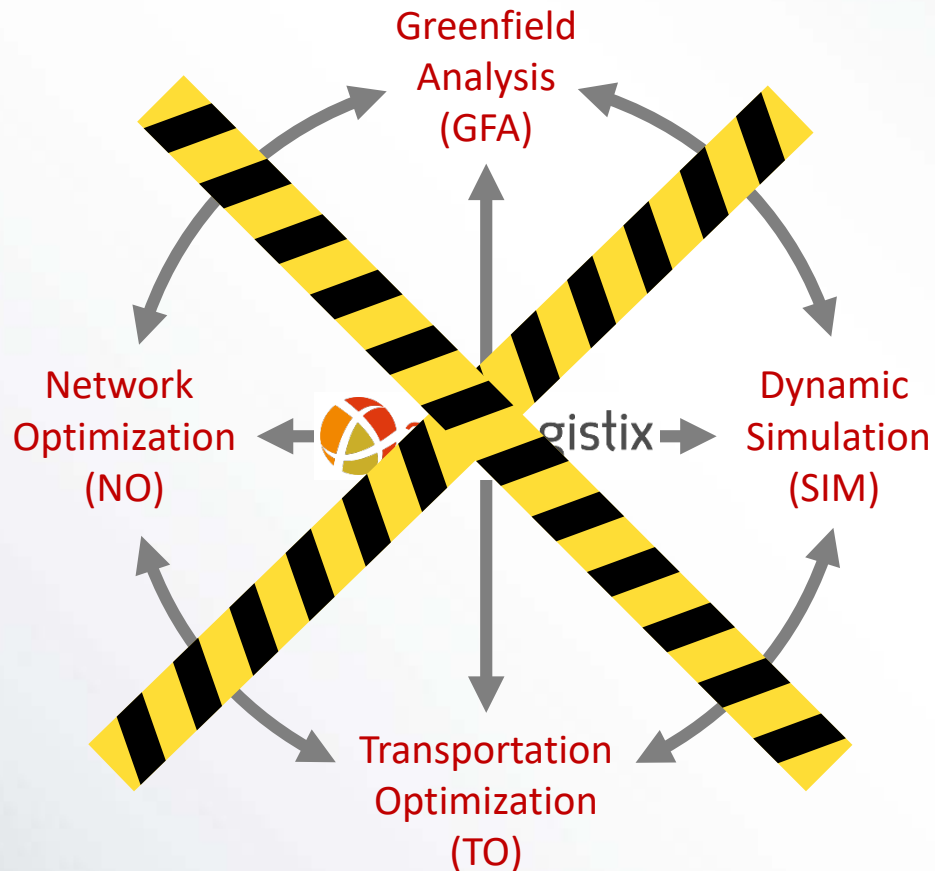
- GFA
 - GFA with roads
 - Includes supplier

- Network optimization
 - Custom constraints
 - Indicators
 - Special functions
 - Vehicles flows
 - Leads time for flows
 - CO₂ emission



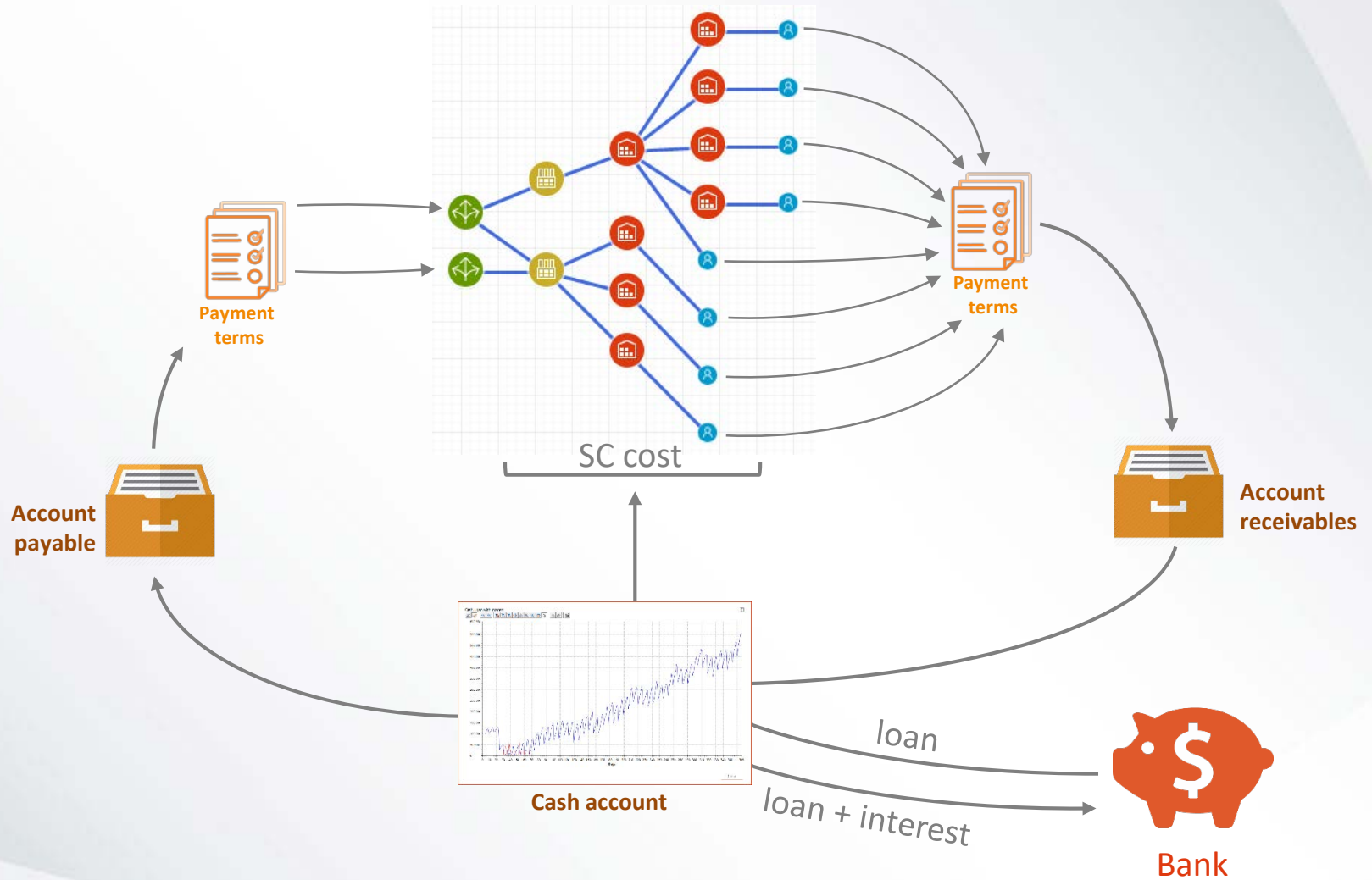
- Feasibility check (NO)
 - anyLogistix checks the reasons for infeasibility and suggests ways to avoid them

What is New: Scenario Conversion

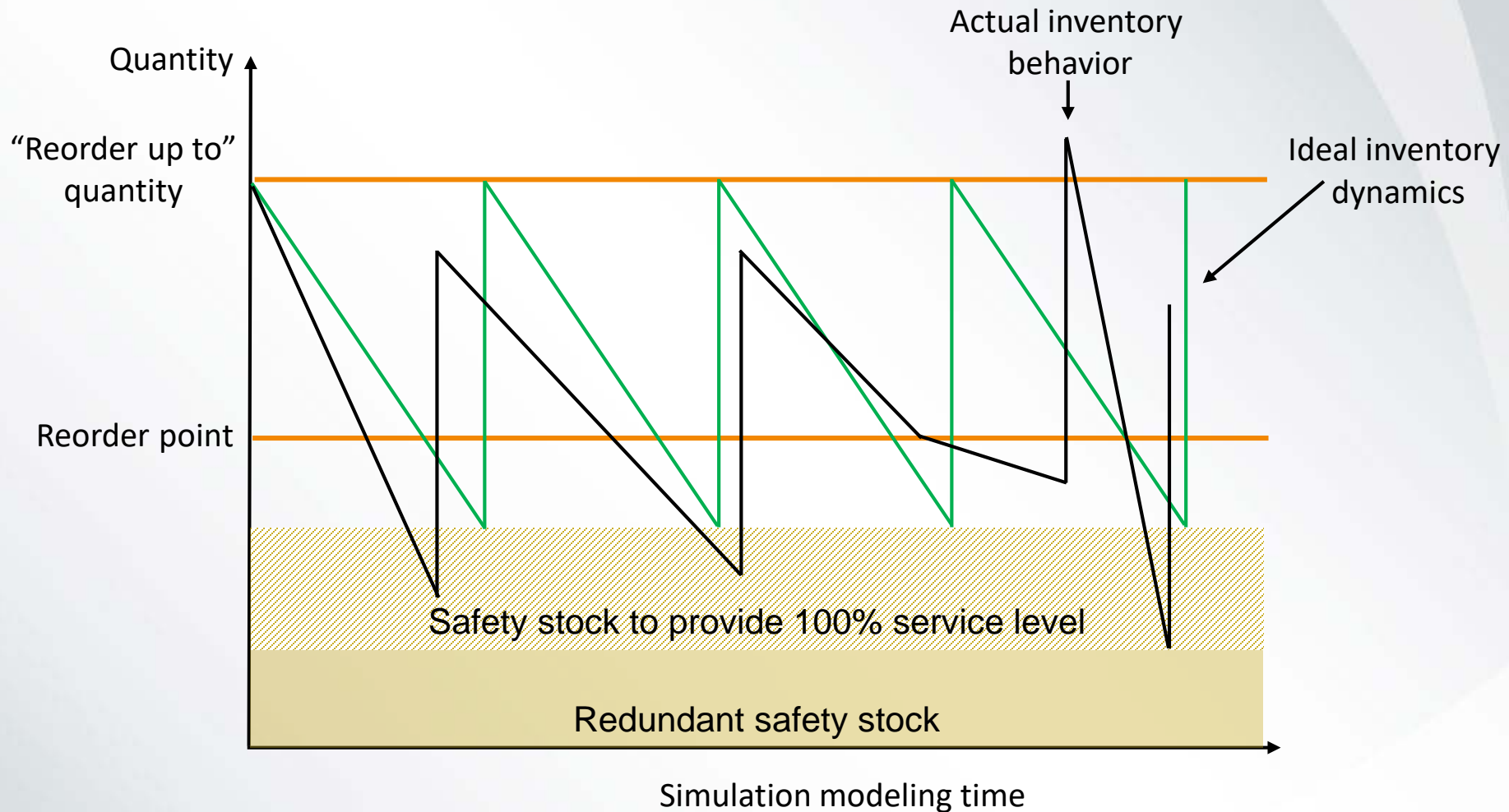


- Problem
 - USAGE BARRIER: How to switch between different types of scenario?
- Solution:
 - anyLogistix enables you to convert results or scenarios into other types of scenario

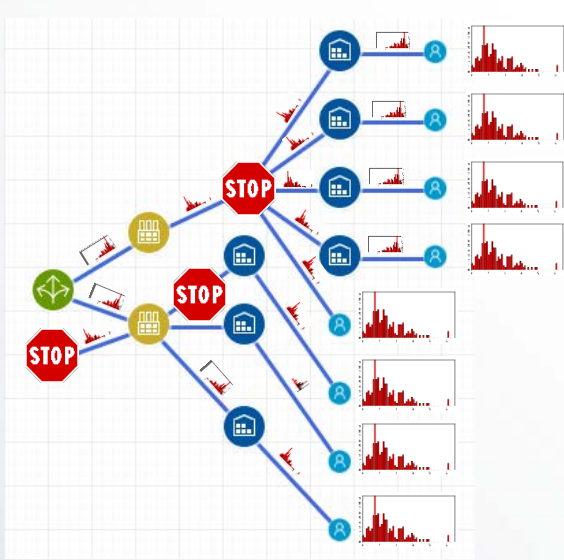
What is New: Cash to Serve



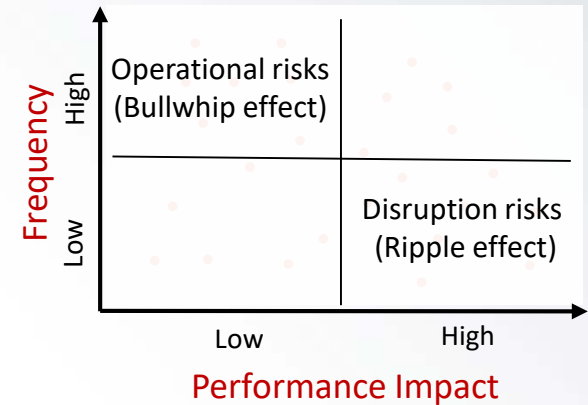
What is New: Safety Stock Estimation



What is New: Risk Analysis



- Performance Impact
 - Service level
 - Revenue
 - Total cost
 - Profit
 - Demand fulfillment
 - Lead time
- Time to recover



What is New: Extensions

Extensions manager

Extensions templates

The screenshot shows the 'anyLogistix - Informs 2018' application. The 'Extensions' menu is open, showing options like 'Create New...', 'Edit', and 'Manage...'. A callout points to the 'Manage...' option. Below the menu is a list of extensions with columns for #, Enabled, Name, Type, Class, Package, and File. A callout points to the 'Extensions templates' section of the list. To the right, a dialog box titled 'Select the object(s) to extend:' is shown, with a list of objects including Customer, DC, Factory, Inventory Policy, Sourcing Policy Multiple, Sourcing Policy Parametrized, and Sourcing Policy Single. Below the list is a text field for '.alp file:' and 'OK' and 'Cancel' buttons. At the bottom, a table shows 'Inclusion Type' and 'Additional f' columns with values like 'Include' and 'Additional p'.

The list below comprises custom ALX extensions that are either stored in the **extensions folder** or added manually from any other location. The enabled extensions become available in the corresponding tables of any project's scenario. [read more...](#)

#	Enabled	Name	Type	Class	Package	File
1	<input checked="" type="checkbox"/>	Online Shop DC	DC	OS_DC	onlineshop	OnlineShopLib.jar
2	<input checked="" type="checkbox"/>	Online Shop Customer	Customer	OS_Customer	onlineshop	OnlineShopLib.jar
3	<input checked="" type="checkbox"/>	TCCTemplate	Transportation Cost Calculator	TCCTemplate	alx_templates_3	HeadphonesFactory.jar
4	<input checked="" type="checkbox"/>	SourcingTypeSingleTemplate	Sourcing Policy	SourcingTypeSingleTemplate	alx_templates_3	HeadphonesFactory.jar
5	<input checked="" type="checkbox"/>	SourcingTypeMultipleTemplate	Sourcing Policy	SourcingTypeMultipleTemplate	alx_templates_3	HeadphonesFactory.jar
6	<input checked="" type="checkbox"/>	HeadphonesFactory	DC	HeadphonesFactory	alx_templates_3	HeadphonesFactory.jar
7	<input checked="" type="checkbox"/>	Customer_Template	Customer	Customer_Template	alx_templates_3	HeadphonesFactory.jar
8	<input checked="" type="checkbox"/>	XFactory	DC	XFactory	extendedfactory	ExtendedFactory.jar
9	<input checked="" type="checkbox"/>	StaffUtilizationExtendedDCTemplate	Statistics Template	StaffUtilizationExtendedDCTemplate	dc_with_storages	ExtendedDC.jar
10	<input checked="" type="checkbox"/>	SpaceUtilizationTemplate	Statistics Template	SpaceUtilizationTemplate	dc_with_storages	ExtendedDC.jar
11	<input checked="" type="checkbox"/>	XDock policy	Inventory Policy	InventoryPolicyXDock	dc_with_storages	ExtendedDC.jar
12	<input checked="" type="checkbox"/>	ExtendedDC	DC	ExtendedDC	dc_with_storages	ExtendedDC.jar
13	<input checked="" type="checkbox"/>	StaffUtilizationDCWithStaffTemplate	Statistics Template	StaffUtilizationDCWithStaffTemplate	objects	DCWithStaff.jar

Products [1]

anyLogistix 3.0

- Browser-based UI
 - Visualization
 - Dashboard
 - Reports & statistics
- Network optimization
 - Batches
 - Limiters (not more than N flows allowed)
- Transportation Optimization
 - CVRPTW – Capacitated Vehicle Routing Problem with Time Windows
- Simulation
 - Support for external BI tools
 - Shared fleet (depot)
 - Operating hours/Time Windows
- Migrate default database to SQL Express or Postgress
- MacOS version
- Release time: December 2018

Thank you!

Find more information at www.anyLogistix.com

- ALX textbook
- ALX case studies
- Download anyLogistix PLE



© The AnyLogic Company | www.anyLogistix.com | www.anylogic.com